

# Continental M7 Professional

 **PROFESSIONAL**  
SERIES



**JANOME**

[www.janome.ca](http://www.janome.ca)

# PRO FEATURES



**PRECISION** Automatic Needleplate Conversions with 3 Plates **SPEED**  
**STRENGTH** Break Through Power Capacity Ruler Work and an Extra large Workspace



## Big Ideas? No Problem!

Never before has a machine answered your need for more room! The large 13.5" seamless flatbed sewing surface will allow you to have more time sewing and less time clipping, rolling and re-arranging your projects to fit inside a tiny sewing space. No need to "stuff" your King size quilts into a cramped sewing area, as you now have 5.51" of height between the body of the machine and the sewing bed. Add in the 3.15" space in the needle area and the Continental M7 gives you the largest work space of any household-use sewing machine.

## Helping You Do More

Need a little inspiration to spark your imagination and get the most out of all of those sewing machine features? AcuSpark is just a scan away! The exclusive Janome app will provide you with tutorials, how-to videos and more by simply using your smart phone or tablet to scan the QR code on the screen. No matter what application you are working on, help is just a vscan away.



## We've Got the Power

Engineered with a newly redesigned motor, the M7 provides you with powerful penetration and needle force, allowing you to easily tackle heavyweight home dec fabrics like canvas in order to make your decorating dreams come to fruition.



## Avoiding Empty Bobbin Pitfalls

For everyone who has sewn a long seam, only to find that your bobbin thread ran out after the first few inches, our advanced Optical Bobbin Monitoring System is for you. New Janome technology allows the M7 to constantly watch your bobbin thread supply while sewing, so that you will receive a warning as soon as the bobbin thread gets low, not when it's too late at the end of your seam.



# CONTROL

1,300 SPM, Intelli-Feed™ and AcuFeed™ Flex Plus

# POWER

Technology driven on-board help apps

# ACCURACY

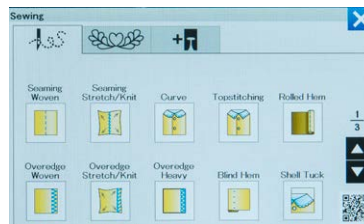


## Meeting Your Need for Speed and Strength

Another industry first, the Continental M7 is the fastest top loading home sewing machine available. With the adoption of a DC brushless motor, you will be able to enjoy 1,300 stitches per minute without having to give up on strength or stability. Add in the full metal frame and Janome's high standards for vibration suppression and you can be assured of a pleasurable, smooth and high-performance sewing experience.

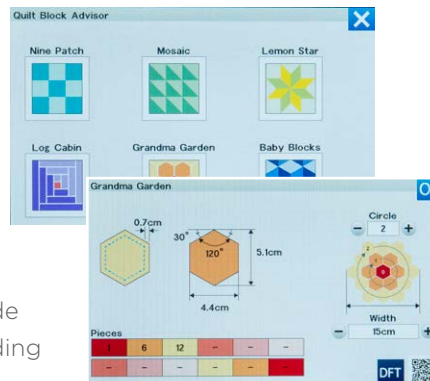
## Your Favorite Sewing Applications... Expanded

The built-in Sewing Applications mode has always been a great time-saver for automatically setting up the machine and recommending the right foot for the application you're about to start. The M7 takes this to the next level. We've added additional functions like inserting a zipper into a small bag, Heirloom techniques, and settings for optional accessories like the Ultra Glide foot.



## Doing the *Math* for You

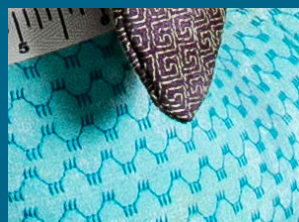
Not sure how to cut your log cabin strips for a 10" block? Let our Quilt Block Advisor do the work for you. Input the number of rows/size of work for traditional quilt patterns like Nine Patch, Log Cabin, Baby Blocks and more. The Quilt Block Advisor will help you break down each section and provide you with the cutting size of pieces including seam allowance.



# SEW THE LOOK



If you love animals and pretty stitches, this is the perfect combination for you. Embellish, texturize and quilt your fabric while making these pieced stuffies by FunkyFriendsFactory.com. Because your 9 mm decorative stitches can be reduced, programmed and in some cases even manipulated to look like hand sewn stitches on the Continental M7, you will have so much fun experimenting with your stitches, it may take a while before you actually get to the point of sewing the pattern pieces together to make your stuffed animal.



Take it to the next level by using your expanded Sewing Applications to use optional decorative feet, which includes couching, piping and more. And, because the M7 has Intelli-feed, you can always be sure to get the beautiful stitch results that you deserve.

### Superior Needle Threader & High Visibility

Threading couldn't be easier! Set your thread, push the lever on the left side, release and sew! This time saving feature allows you to get sewing faster. Its advanced design feeds the thread through the eye of the needle with precise accuracy every time. The streamlined machine head provides excellent visibility around the needle area.

### Convenience at Your Fingertips

The Easy Convenience Features let you get more out of your sewing time. The most important functions are perfectly placed for effortless access. Start/Stop button, Reverse, Locking Stitch, Needle Up/Down and Thread Cutter are all there. And most importantly: the Automatic Presser Foot Lift.

### Bright & Vivid View, Lighting & Screen

Using the large, HD 7" touchscreen is like working on your favorite tablet. Bright white LED lighting illuminates your sewing space with shadow-free coverage. Enhance your view with the readily detachable AcuView™ magnifier.

### Stitches, Feet & Extras

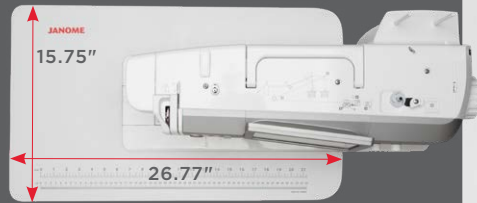
The M7 has an extensive and generous package of all the necessities. Choose from 400 stitches including 52 hand-style stitches. Choose from an amazing array of 23 standard feet and 32 additional sewing accessories. The extra wide table, with a built-in accessory storage drawer, gives support for free motion quilting and other large projects.

### Independent Bobbin Winding Motor

With an independent bobbin motor, there is no need to stop your sewing. Set up your bobbin, push the Bobbin Winding button and keep sewing your seams while the machine simultaneously winds your bobbin.

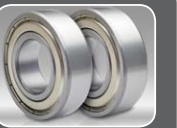
### Ample Work Area

More room for larger projects. The M7 provides an industry leading 13.5" to the right of the needle and 17.81" of total work area. The needle area is sleek and trim so you can easily see as you work. Add the extra wide extension table, 26.77 x 15.75", and you have even more workspace.



### Stable Running

This is a reliable and robust sewing machine. With an Industry First for single-needle home sewing machines, the M7 comes with a DC brushless motor that offers greater efficiency. The main shaft is equipped with ball bearings which provide low torque, making it powerful and stable, even when running at high speeds.



### Computerized One-Touch Needle Plate Conversion

No screws or tools necessary! Simply push the on-screen button to release the plate and place a new one in place. The M7 will automatically retract the new plate into place using a patented magnetic system. The M7 comes with three standard needle plates: zigzag, straight stitch and the Professional Grade HP plate.

### SFS-i

The new SFS-i, intelligent feed system, is designed to keep the feed dogs down and out of the way, so that you can easily position your fabric where you want it to be. As soon as you start sewing, the feed dogs come up and perfectly grab the fabric.

### AcuFeed™ Flex Plus

AcuFeed™ Flex Plus is an integrated system that perfectly guides your fabric from the top and the bottom. Perfect for quilts, plaids, and any sewing that requires precise control.

### Extra Large Seamless Flatbed Workspace

The seamless, heavy-duty, powder-coated, all metal flatbed offers an uninterrupted, large sewing area with 13.5 inches (343mm) to the right of the needle. With a 5.51 inch (140mm) workspace height, you'll complete any sewing project with ease.

### Precision Stitch Adjustment

The tactile exterior dials often preferred by active sewists include multi-function rotary encoder dials for stitch width, length and additional functions.

# Product Specifications



Continental M7



Horizon MC9450 QCP



MC6700P

Built-in Stitches	400	350	200
Buttonholes	12 Sensor; 1 Automatic	10 Sensor; 1 Automatic	8 Sensor; 1 Automatic
Alphabets	8	7	5
Work Space (Right of the needle)	13.5"	11"	10"
Foot Pressure Adjustment	Automatic	Automatic	Manual
USB Port	X	X	
Thread Tension	Computerized	Computerized	Manual
Needle Threader	Superior	Superior	Superior
Easy Set Bobbin	X	X	X
Optical Bobbin Sensor	X		
Bobbin Winding Plate with Cutter	X	X	
Memorized Needle Up/Down	X	X	X
Automatic Presser Foot Lift	X	X	
Automatic Pivot	X	X	
Needle Plate Conversion	Computerized One-touch	One-step	One-step
Included Needle Plates	3	3	3
AcuFeed™ Flex System	AcuFeed Flex Plus	AcuFeed	AcuFeed
SFS System	SFS-i	SFS+	SFS+
Variable Zig Zag for Free Motion Quilting	X	X	
Easy Convenience Buttons	X	X	X
Sewing Applications Support	X	X	
Stitch Composer Stitch Creation Software	X	X	
Independent Bobbin Winding Motor	X		X

## Accessories

You'll have the tools you need to tackle any project with the M7's included accessories. You'll find essentials like the Zipper and Blind Hem feet, but another great addition are the three types of Free Motion Quilting feet. There is an accessory box included and the extra-wide table's built-in accessory drawer can also be used for storage so you'll never misplace your feet again!



[www.janome.ca](http://www.janome.ca)

**JANOME**